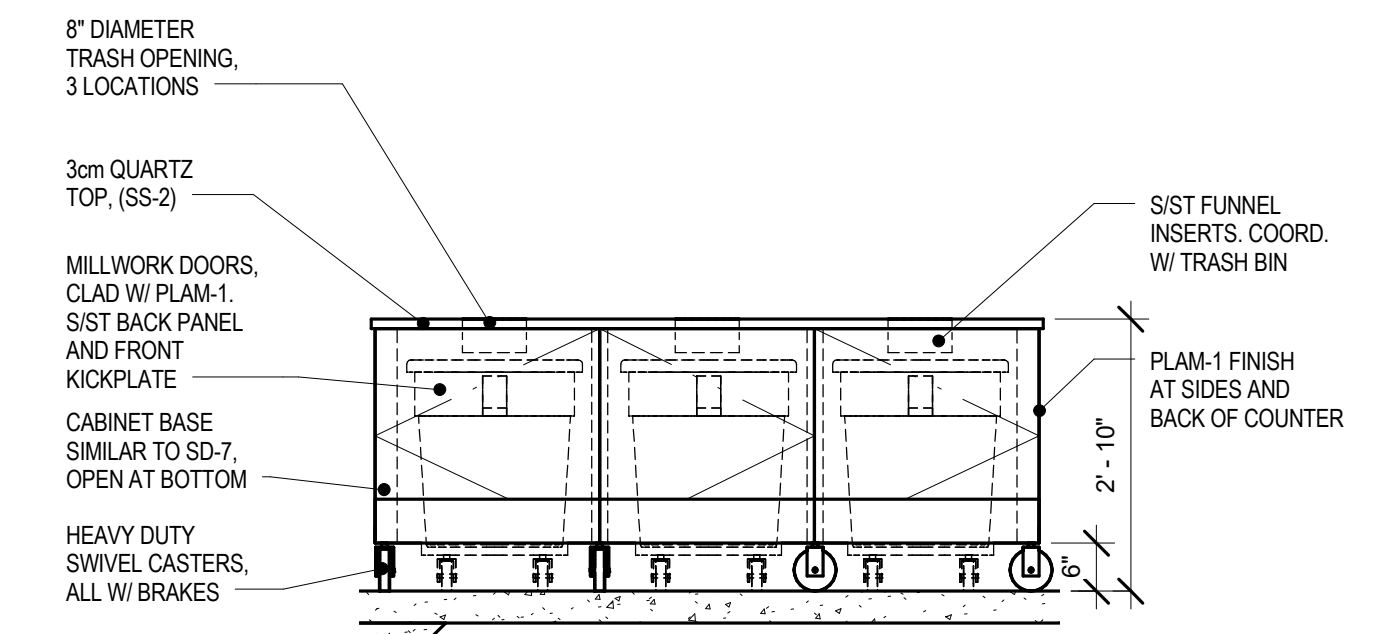


RRA KEYNOTE LEGEND	
KEYNOTE	KEYNOTE TEXT
SD-1b	TABLE EDGE - RAISED ROLLED
SD-2a	BACKSPLASH - AT WALL
SD-3	FRAMEWORK
SD-4	TABLE & SINK LEGS
SD-6	REMOVABLE UNDERSHELF
SD-10a	PRE-RINSE 22"x26 1/2"x6" DP.
SD-10k	POT & PAN 28"x26 1/2"x14" DP.
SD-11	DISPOSER CONTROL CHASE
SD-41	PRE-RINSE SINK W/RACK SLIDE

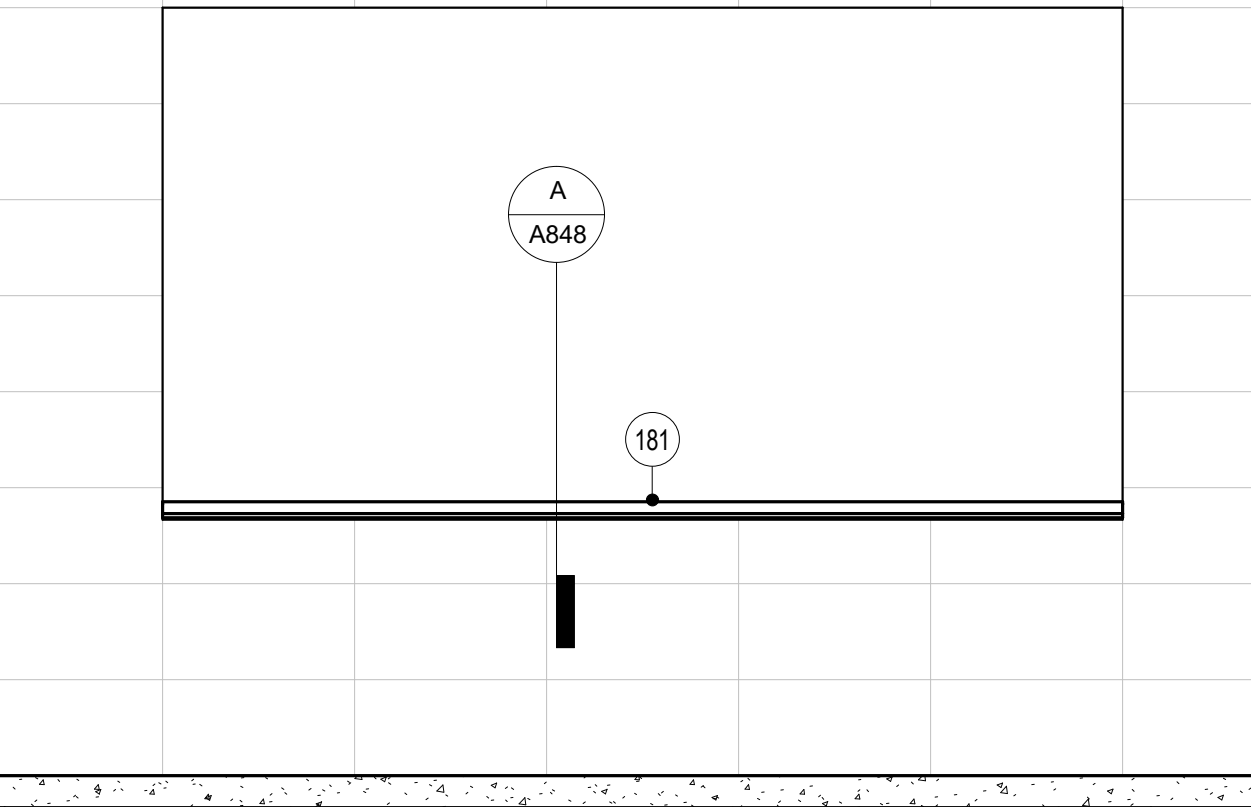
FINISH SCHEDULE			
PCT-11	MANUFACTURER: BACK BAY STYLE: ET-15 COLOR: ETIC PALISSANDRO SIZE: 4' X 36", 6' X 36", 8' X 36"	PLAM-1	MANUFACTURER: PIONITE PATTERN: WM115 SUGAR MAPLE 11 FINISH: SUEDE
PCT-13	MANUFACTURER: DAL TILE STYLE: COLORWAVE COLOR: CW01 ICE WHITE STD SIZE: 1' X 1' GLASS MOSIAC	MP-1	MANUFACTURER: RIGIDIZED METAL PATTERN: SANDTEX
PCT-14	MANUFACTURER: DAL TILE STYLE: COLORWAVE COLOR: CW28 EVENING MIXER STD SIZE: 1' X 1' GLASS MOSIAC	DOOR PULL	MANUFACTURER: HAFELE MODEL: 124.02.920 FINISH: ANODIZED SILVER
SS-1	MANUFACTURER: ZODIAQ COLOR: CLOUD WHITE THICKNESS: 3mm	** VERIFY FINAL FINISH SELECTION & SUBMIT SAMPLE TO ARCHITECT/INTERIORS FOR APPROVAL PRIOR TO FABRICATION. GRAIN OF LAMINATE TO RUN VERTICAL UNLESS OTHERWISE NOTED. **	
SS-2	MANUFACTURER: ZODIAQ COLOR: STORM GREY THICKNESS: 3mm		

WAREWASHING

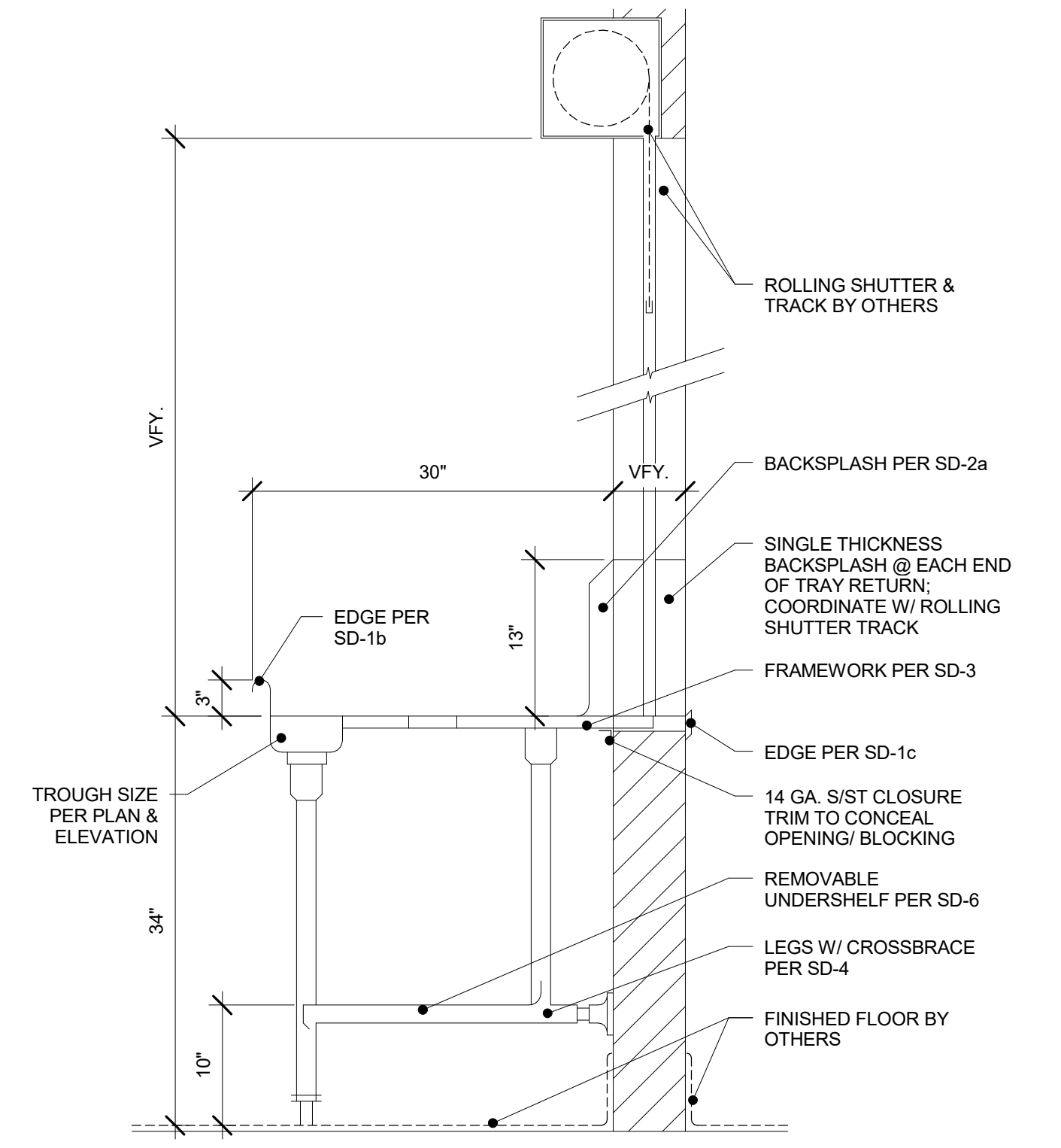
1 ITEM #180 - MOBILE TRASH BIN
1/2" = 1'-0"



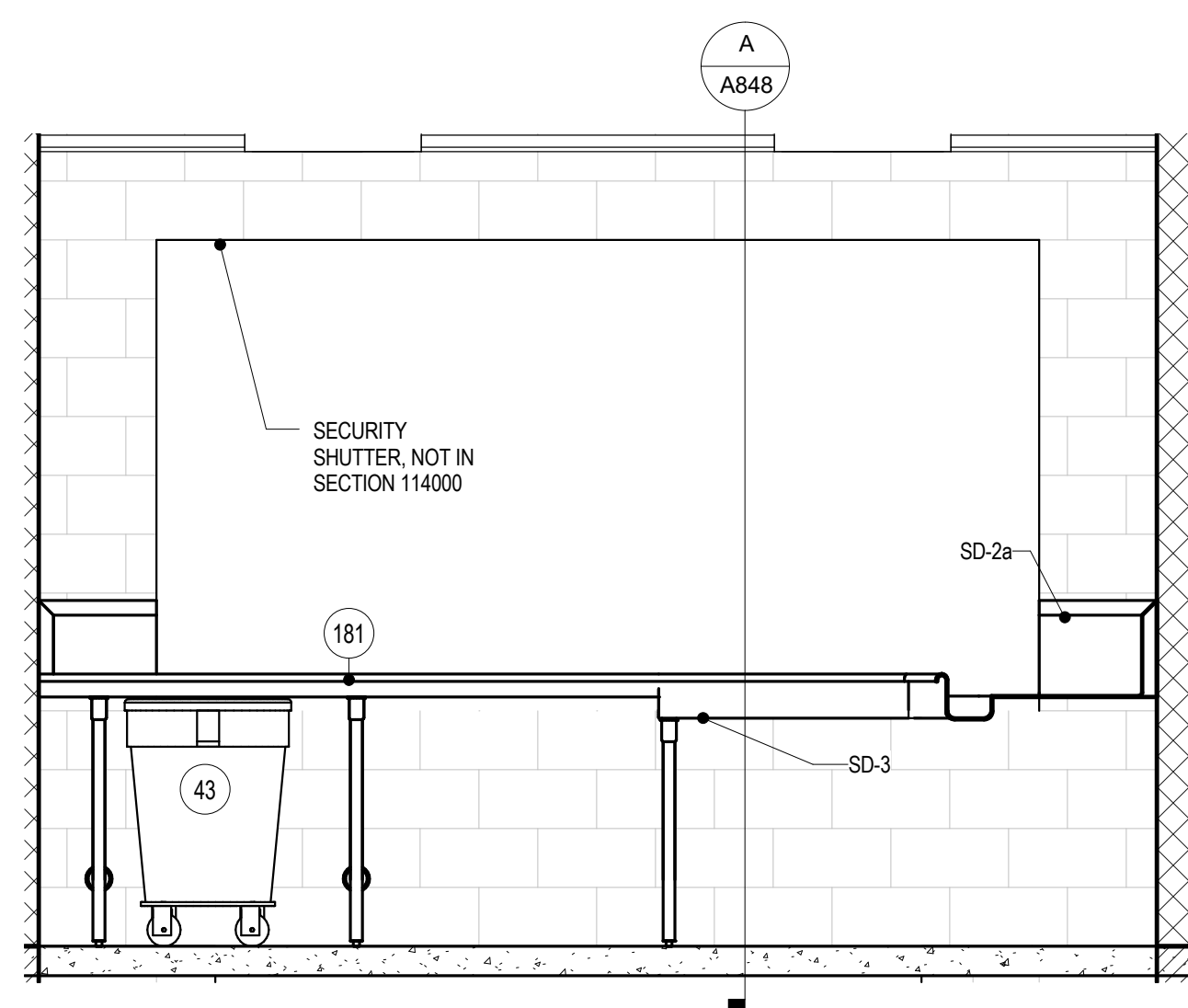
3 ITEM #181 - TRAY RETURN W/SOILED DISHTABLE A
1/2" = 1'-0"



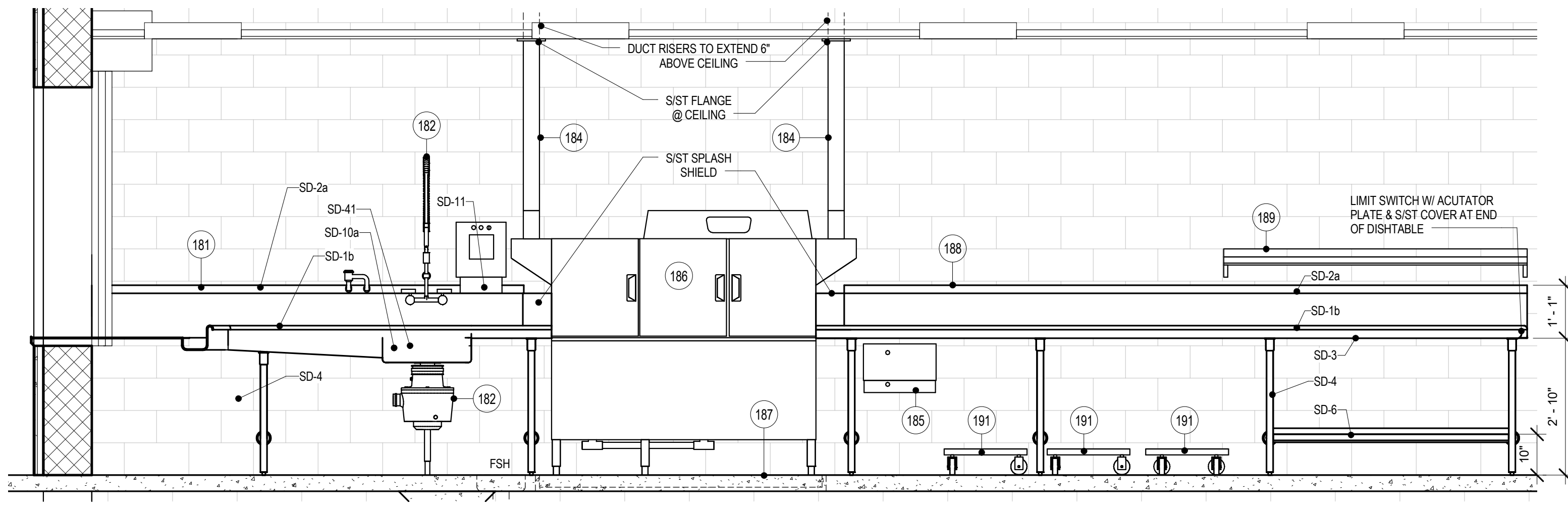
A SD-65 SECTION @ TRAY RETURN - SCHOOL
1" = 1'-0"



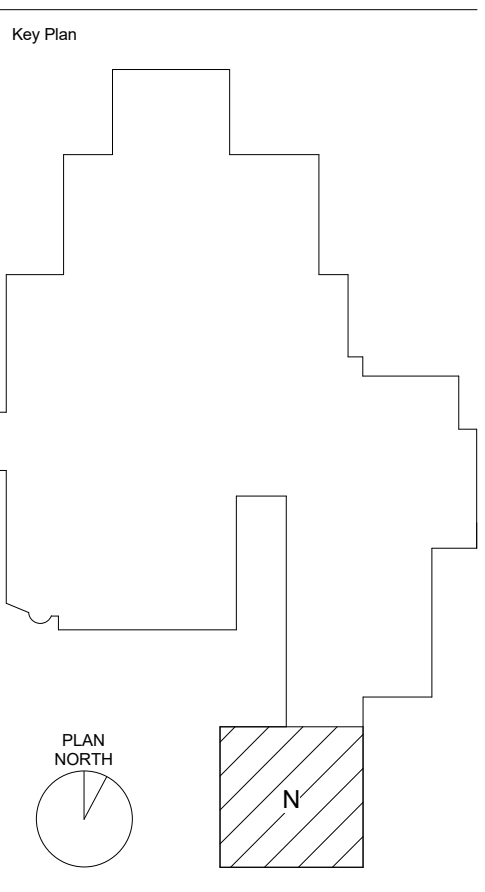
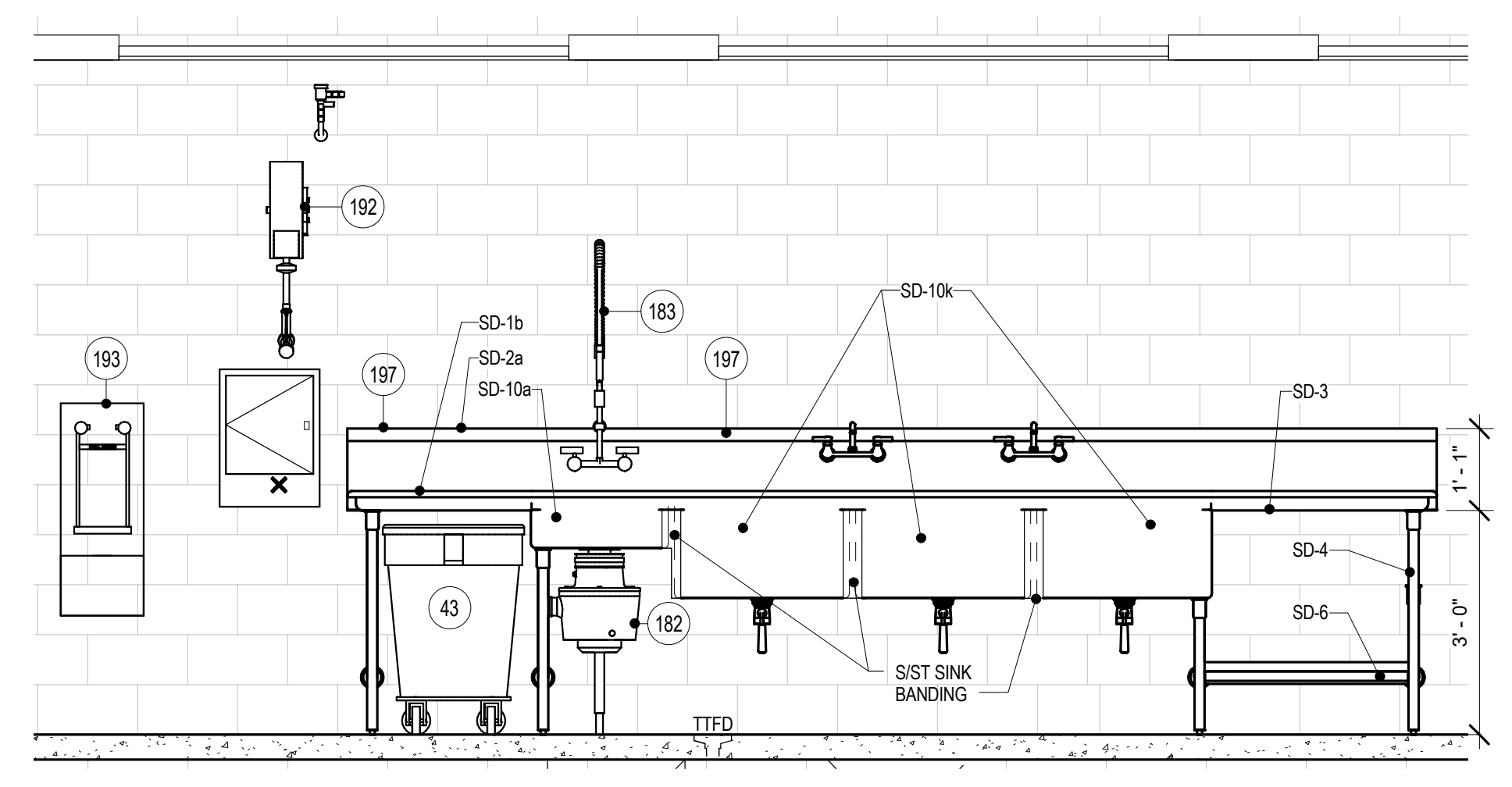
4 ITEM #181 - TRAY RETURN W/SOILED DISHTABLE B
1/2" = 1'-0"



5 ITEM #186 - DISHMACHINE W/BOOSTER HEATER
1/2" = 1'-0"



6 ITEM #197 - POT & PAN SINK
1/2" = 1'-0"



Sheet Issue Date	100% CD SET	04/07/2017
Previous Issue Dates	100% DD SET	11/11/2016
	95% CD SET	03/20/2017