

PRINTED: 4/7/2017 2:57:17 PM



200 5TH AVENUE SE SUITE 201
CEDAR RAPIDS, IA 52404
319-363-6018 PHONE
319-363-7349 FAX
www.opnarchitects.com
opn@opnarchitects.com

All reports, plans, specifications, computer files, field data, notes and other documents and instruments prepared by OPN Architects, Inc. as instruments of service shall remain the property of OPN Architects, Inc. OPN Architects, Inc. does not warrant its contract law, liability and other reserved rights, including the copyright therein.

Owner
COLLEGE COMMUNITY SCHOOL DISTRICT
401 76TH AVE SW
CEDAR RAPIDS, IA 52404

Project
PRAIRIE HIGH SCHOOL RENOVATION
401 76TH AVE SW
CEDAR RAPIDS, IA 52404

Civil Engineer
HALL & HALL ENGINEERS
1880 BOYSSON RD
HIAWATHA, IA 52233
P. 319-362-9548

Structural Engineer
M2B STRUCTURAL ENGINEERS
422 2ND AVE SE
CEDAR RAPIDS, IA 52401
P. 319-364-0669

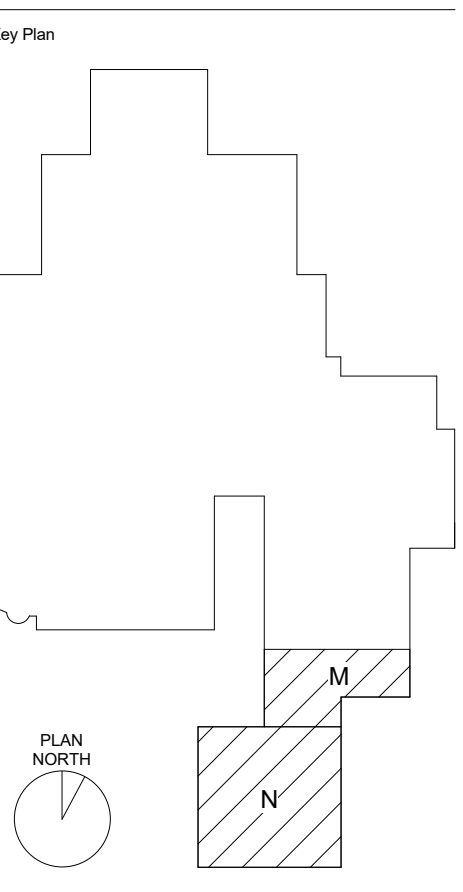
Mechanical Engineer
DESIGN ENGINEERS
8801 PRAIRIE VIEW LN SW
CEDAR RAPIDS, IA 52404
P. 319-841-1944

Electrical Engineer
DESIGN ENGINEERS
8801 PRAIRIE VIEW LN SW
CEDAR RAPIDS, IA 52404
P. 319-841-1944

ACOUSTIC CONSULTANT
THRESHOLD ACOUSTICS
141 W JACKSON BLVD #2080
CHICAGO, IL 60604
P. 312-386-1400

FOODSERVICE CONSULTANT
RIPPIE ASSOCIATES
6117 BLUE CIRCLE DR, SUITE 100
MINNEAPOLIS, MN 55343
P. 952-933-0313

CASEWORK CONSULTANT
WYNN O. JONES & ASSOCIATES
P.O. BOX 318
754 ALDERSON STREET
SCHOFIELD, WI 54476
P. 715-359-5195



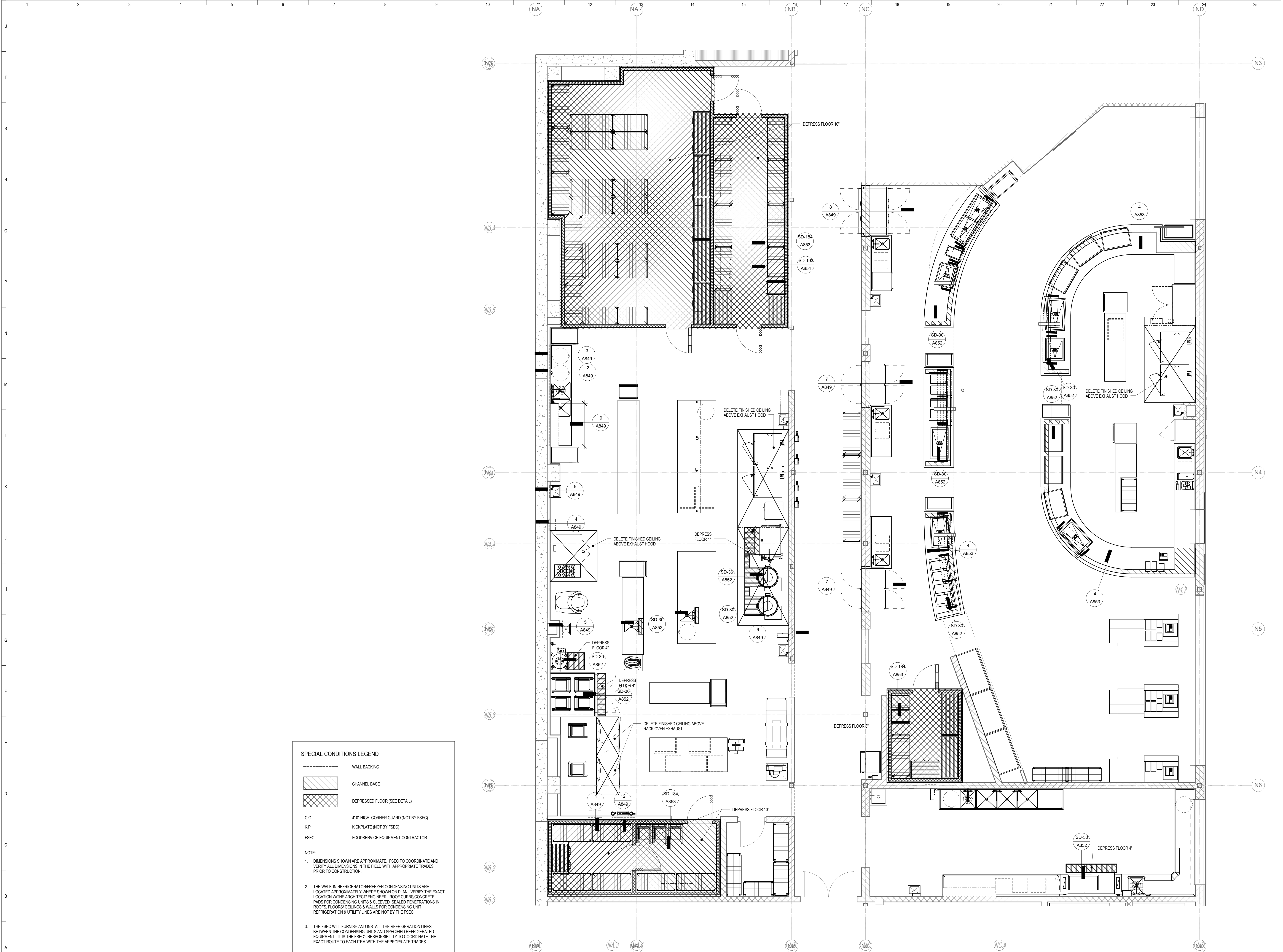
Sheet Issue Date	100% CD SET	04/07/2017
Previous Issue Dates	100% DD SET	11/11/2016
	95% CD SET	03/20/2017
Revision		Date

CONSTRUCTION DOCUMENTS

Drawing
FOODSERVICE EQUIPMENT SPECIAL CONDITIONS PLAN

OPN Project No. 1427790

A850



SPECIAL CONDITIONS LEGEND

	WALL BACKING
	CHANNEL BASE
	DEPRESSED FLOOR (SEE DETAIL)
C.G.	4'-0" HIGH CORNER GUARD (NOT BY FSEC)
K.P.	KICKPLATE (NOT BY FSEC)
FSEC	FOODSERVICE EQUIPMENT CONTRACTOR

NOTE:

- DIMENSIONS SHOWN ARE APPROXIMATE. FSEC TO COORDINATE AND VERIFY ALL DIMENSIONS IN THE FIELD WITH APPROPRIATE TRADES PRIOR TO CONSTRUCTION.
- THE WALK-IN REFRIGERATOR/FREEZER CONDENSING UNITS ARE LOCATED APPROXIMATELY WHERE SHOWN ON PLAN. VERIFY THE EXACT LOCATION WITH THE ARCHITECT/ENGINEER. ROOF CURBS/CONCRETE PADS FOR CONDENSING UNITS & SLEEVED, SEALED PENETRATIONS IN ROOFS, FLOORS/CEILINGS & WALLS FOR CONDENSING UNIT REFRIGERATION & UTILITY LINES ARE NOT BY THE FSEC.
- THE FSEC WILL FURNISH AND INSTALL THE REFRIGERATION LINES BETWEEN THE CONDENSING UNITS AND SPECIFIED REFRIGERATED EQUIPMENT. IT IS THE FSEC'S RESPONSIBILITY TO COORDINATE THE EXACT ROUTE TO EACH ITEM WITH THE APPROPRIATE TRADES.

1 FOODSERVICE SPECIAL CONDITIONS PLAN - KITCHEN/SERVERY
1/4" = 1'-0"